



## ABOUT US

### Look to the world, based on the world.——

Zhongxing Group was founded in 2008, with fixed assets of 50 million, headquartered in Luoyang City, Henan Province. It is a group enterprise with diversified development, including four major business systems: technology research and development, manufacturing, logistics and transportation, and sales services. The company has five independent production plants. It has a research and development center and five production bases in Luoyang, covering an area of 40,800 square meters. There are more than 20 branch companies in Hefei, Nanjing, Nanning, Xi'an, Lanzhou, Urumqi, Kunming, Guiyang, Chengdu, etc. Its products include office furniture series, smart series, sanitation series, school series, storage shelf series, automatic welding equipment series, transportation facilities series, etc., the products cover more than 30 provinces and cities, and are exported to more than 20 countries around the world.

At present, the group has more than 2,000 employees nationwide, with an annual production capacity of more than 320 million yuan. The products have successfully passed international quality management system certification, environmental management system certification, occupational health and safety management system certification, after-sales service evaluation system five-star certification, etc. In the process of large-scale operation and standardized operation, Zhongxing always adheres to the core values of "environmental protection, humanity, and efficiency", comprehensively optimizes the operation process, and continuously develops intelligent and humanized products, providing employees with opportunities to fully display their talents. The stage creates the greatest economic benefits for customers. Facing today, we strive to create; looking forward to the future, we will continue to forge ahead! Zhongxing people, persevere, forge ahead, build a world-class brand enterprise and become a leader in the industry!



ADD : 15F, Block A, Zhenghe International Building,  
Xinyi Avenue, Luolong District, Luoyang City,  
Henan Province

TEL : 0379-61277999

WEB: [www.lysodor.com](http://www.lysodor.com)



SMART CITY

## Smart · City · Future



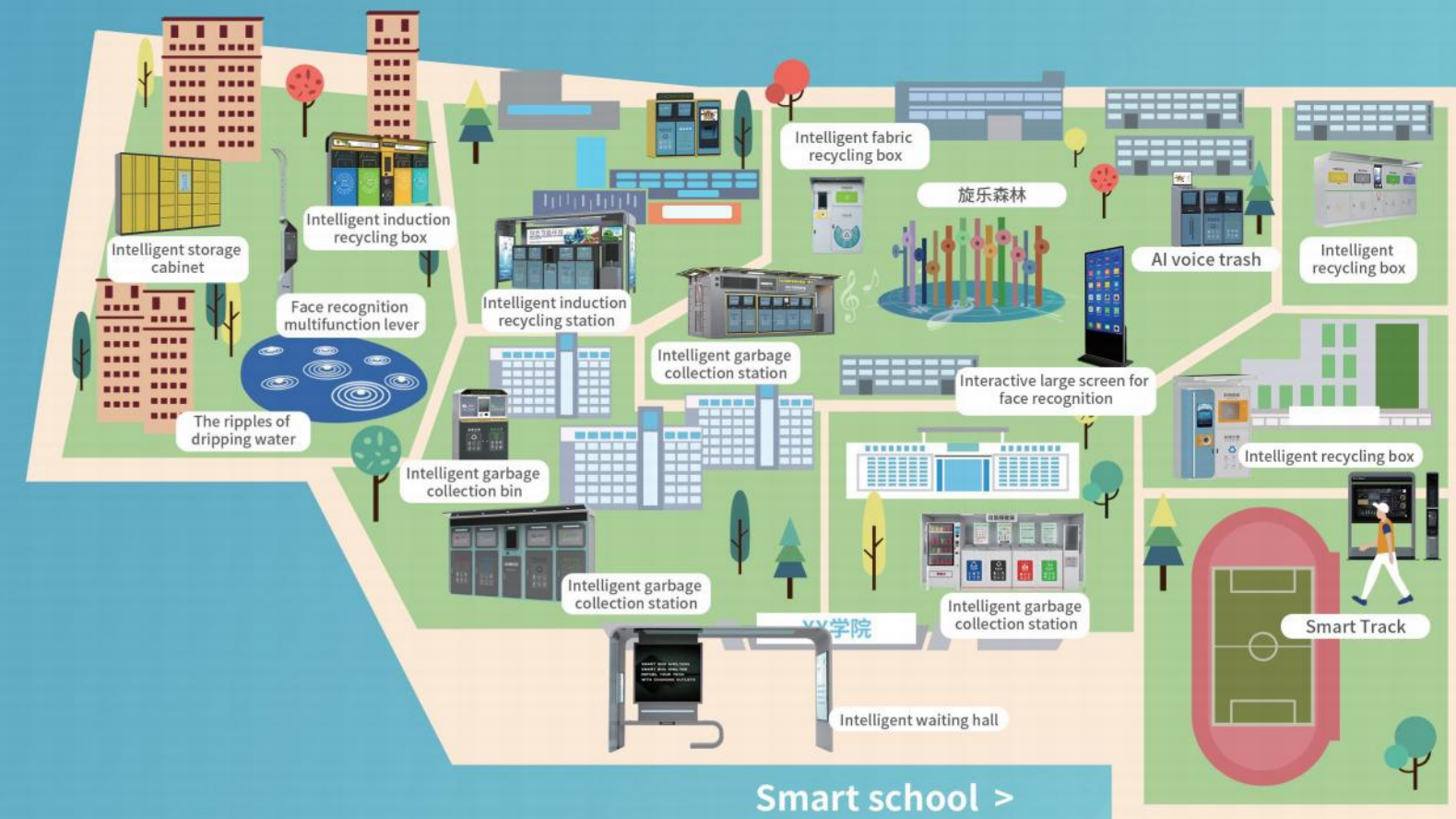


# Smart city one-stop service

## Smart city one-stop service

Smart city includes software, hardware and system integrated management, such as smart service, smart entertainment, smart fitness, smart management, etc. Smart city use the Internet, cloud computing, artificial intelligence and other technologies to intelligently construct and upgrade city comprehensive parks, campuses, community parks. Let people in the park with intelligent and convenient management and experience more interesting things. It takes ecological livable as the premise, intelligent experience and digital management as the core, and public cultural leisure and recreation as the feature, to achieve fine service and intelligent management of people, vehicles, places, events.

Relying on profound experience in the garden ecological industry, independent innovation research and development ability, integration of technology and business, enabling the construction of parks in the new era, to be the promoter of digital transformation of parks, the enabler of intelligent operation of big data in parks, the practitioner of construction of smart parks in the new era, to promote the intelligent upgrading of traditional parks, to support the development and construction of smart cities, the application of emerging technologies such as the Internet, cloud computing, big data, AI and GIS will continue to drive the intelligent generation selection and upgrading of software and service products, integrate park services and management, enable the upgrading of park construction value, and create a new ecological integration of smart city industry.





# Smart city management platform

## Smart Park APP

### A phone runs the park

The smart park APP is used by park managers. It includes main functions such as intelligent monitoring and analysis, alarm linkage, environmental energy consumption monitoring, pest identification, real-time positioning, and statistical reports. It is to intelligently monitor the park's appearance, facilities, environment, and safety on the mobile management platform.



## Visualization platforms for emergency , comprehensive management and big data

### Fully connected device/fully integrated data/fully intelligent scheduling/data visualization

Through the establishment of park command and dispatch system, the emergency command and dispatch platform can effectively protect the safety of life and property of tourists, as well as the safety of scenic spot resources in the park. It provides a variety of communication and information services, monitors and analyzes and predicts the progress of events, and provides data and support for decision-making. The system can be managed by one map on the visualization platforms. The operation of all the systems in the park can be summarized through the park map. The monitoring, control, maintenance and management can be integrated to realize the daily operation supervision and emergency command, dispatch and control of the park.



Emergency command and dispatch platform



Integrated management information platform

## Smart campus system

### All-round understanding

Comprehensive and diversified background system architecture, cooperate with the school to grasp students' daily physical test data in real time. It helps to understand students' campus life situation, evaluate teaching results, provide convenience for teachers' overall and personalized teaching, improve teaching level, realize the upgrade of fully intelligent physical test equipment, and visualize students' exercise data. With real-time presentation of backstage production exercise data reports, it implements more accurate physical education.



## Campus visual data platform

### Fully connected device/fully intelligent scheduling/data visualization

The school can grasp students' daily physical test data in real time, understand students' sports status, provide convenience for teachers' overall and personalized teaching, improve teaching level, and unified modular management of campus safety and equipment operation. It integrates control, maintenance and management, perceives campus resources, facilities, environment, safety, students and other information in real time, and finally realizes the daily operation supervision and emergency command, dispatch and control of the campus.







## ● :PEDESTRIAN INTERACTIVE DREAM SPRAY

In the tree-lined section, the Smart Walk combines tree trunks and lamp posts to carry out spray Settings. Whenever it senses that pedestrians are approaching, it will automatically spray to cool down, allowing pedestrians to immediately enter a cool and pleasant environment. The night mist with light changes will enhance the dreamy experience of the trail.

## ● INTELLIGENT LIGHTS

Intelligent lighting is in the busy city, combined with tree trunks, lamp posts, and roads. Whenever the night lights turn on, the city immediately into a gorgeous charming scene.

## ● HUMAN BODY SENSING MODULE

An interactive pedestrian way with intelligent induction in flower shape, adds fun to the street. Infrared induction device, lamp can set a variety of lighting effects to meet the different atmosphere.◦



## INDUCTION WALL

- When visitors approach the wall, they can automatically scan the running movement and project it to the LED wall in the form of dynamic image just like a shadow.
- The starting point can automatically record the user's fastest time to complete the mileage, published a top on the LED wall. It sounds very cool and fashionable.



## HUMAN SENSOR LIGHT

- Integrated the artificial intelligence with the light, the interactive experience between induction light runway and the induction breath light. The light can be changed according to the human, adding fun to the experience.



# Smart city products



## FACE RECOGNITION SCREEN

System: Android      Display screen: 75 inches  
Specification: Custom      Material: thickened steel plate  
Color: Gray      Installation scenarios: parks, scenic spots, public entertainment places  
Main functions: face recognition, heart rate detection, AI interaction, physical fitness detection, sports data, lighting interaction, environmental monitoring, weather monitoring, big data, Internet



## FACE RECOGNITION MULTIFUNCTIONAL POLE

Display screen:15 inches      Material: thickened steel plate  
Specifications: custom      Material: thickened steel plate  
color: white      Installation scene: parks, communities, squares, streets  
Main functions: traffic flow, environmental monitoring, wifi service, emergency charging, emergency call, lighting system, video monitoring



## FACE RECOGNITION INTERACTIVE SCREEN

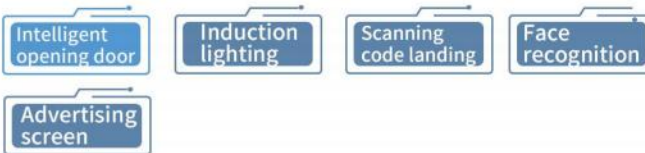
System: Android      Screen :55 inches  
Specifications :1249\*721\*40mm      Material: toughened glass + aluminum alloy  
Color: Black      Installation scene: parks, streets, public entertainment places  
Main functions: face recognition login, information display, data query, intelligent main control screen



# Smart city products

## MULTIFUNCTIONAL STORAGE CABINET WITH FACE RECOGNITION

System: Android      Display :21.5 inches  
Specifications :1950\*460\*3000mm      Material: thickened steel plate  
Color: Yellow      Installation scene: residential estate, office building, street  
Main functions: face recognition, item storage, mobile phone charging



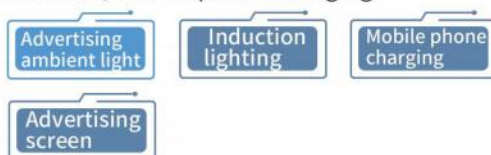
## SMART MOBILE TOILETS

System: Android      Display :21.5 inches  
Specification: Custom      Material: thickened steel plate  
Color: Silver gray      Installation scene: property community, park, street  
Main functions: induction lighting, intelligent door opening, advertising light box, intelligent advertising screen, a washbasin, camera



## SMART BUS SHELTERS

System: Android      Screen :55 inches  
Specification: Custom      Material: thickened steel plate  
Color: Silver gray      Installation scene: community, park  
Main functions: induction lighting, large advertising screen, wireless wifi, mobile phone charging





# Core technology of intelligent dustbin



## Intelligent waste classification overall solution classification system

The intelligent classification system relies on the current more advanced AI technology, such as mobile internet, big data, internet of things, cloud computing, etc., and through the means of information processing, from the aspects of garbage classification publicity, garbage classification and delivery, garbage classification and transportation, garbage classification and treatment, etc., to carry out intelligent management of all aspects of garbage classification. After years of vigorous development and research, it has gradually solved the problems faced by garbage classification work, To provide customers with professional services such as environmental health research, consultation, design, construction, and transportation equipment, thus establishing a comprehensive garbage classification management system.

## Smart Garbage Sorting Software and Hardware Interaction Scenario

### Background data real-time linkage

Huaxun Zhongxing smart garbage sorting collection box has relatively advanced mode and technical advantages in the field of collection, and independently developed an intelligent sorting collection box with complete functions, high intelligence and stable operation. Relying on advanced technologies such as big data and the Internet of Things, this product builds an intelligent classification management system and an information-based big data management platform. Through dynamic monitoring and intelligent management of garbage classification, it can realize real-time linkage of offline and online data, and provide more stable and easily accessible background data support for classification and statistics of recycling volume.



## AI image recognition redefines garbage classification AI intelligent classification system

AI technology continues to extend to the field of environmental protection, bringing new means of waste classification. Under the guidance of AI intelligent classification system, the intelligent classification equipment can take photos, quickly identify and accurately classify the delivered garbage through its own AI camera. AI image intelligent recognition is characterized by accurate identification and analysis of garbage. With the continuous collection and testing of garbage data, and the construction of intelligent domestic garbage classification system and management cloud platform based on artificial intelligence and big data analysis, the intelligent management of garbage classification will become more efficient and convenient.



Background management system  
Management side



WeChat applet  
Application side





# Product advantage

## Smart trash can

- ① Large display screen, fast and smart ✓
- ② Induction drop inlet, convenient and hygienic ✓
- ③ Sensor lighting, no fear of night ✓
- ④ Exchange points to turn waste into treasure ✓
- ⑤ Overfill indication saves time and effort ✓
- ⑥ Intelligent platform software, intelligent control ✓



## traditional trash can

- ① Single function X
- ② It is unhygienic to manually open the cover X
- ③ Can't see clearly at night X
- ④ Unclear classification, waste of resources X
- ⑤ Garbage everywhere X
- ⑥ Manual cleaning is time-consuming and laborious X



# Operation process

## Multi-way login

Meet the needs of different users and quickly apply to everyone

## Sensor lighting

Intelligently sense the surrounding environment, the light will be on when people come, and the light will be off after a delay when people leave

## Double smart door opening method

Support points to open the door and support tourists to put in, so that garbage classification can be applied to different scenarios

## Intelligent software platform

View, trace, and analyze data in different dimensions to provide data support for improving waste classification awareness

Login method

Sensor lighting

Smart door opening

Software platform



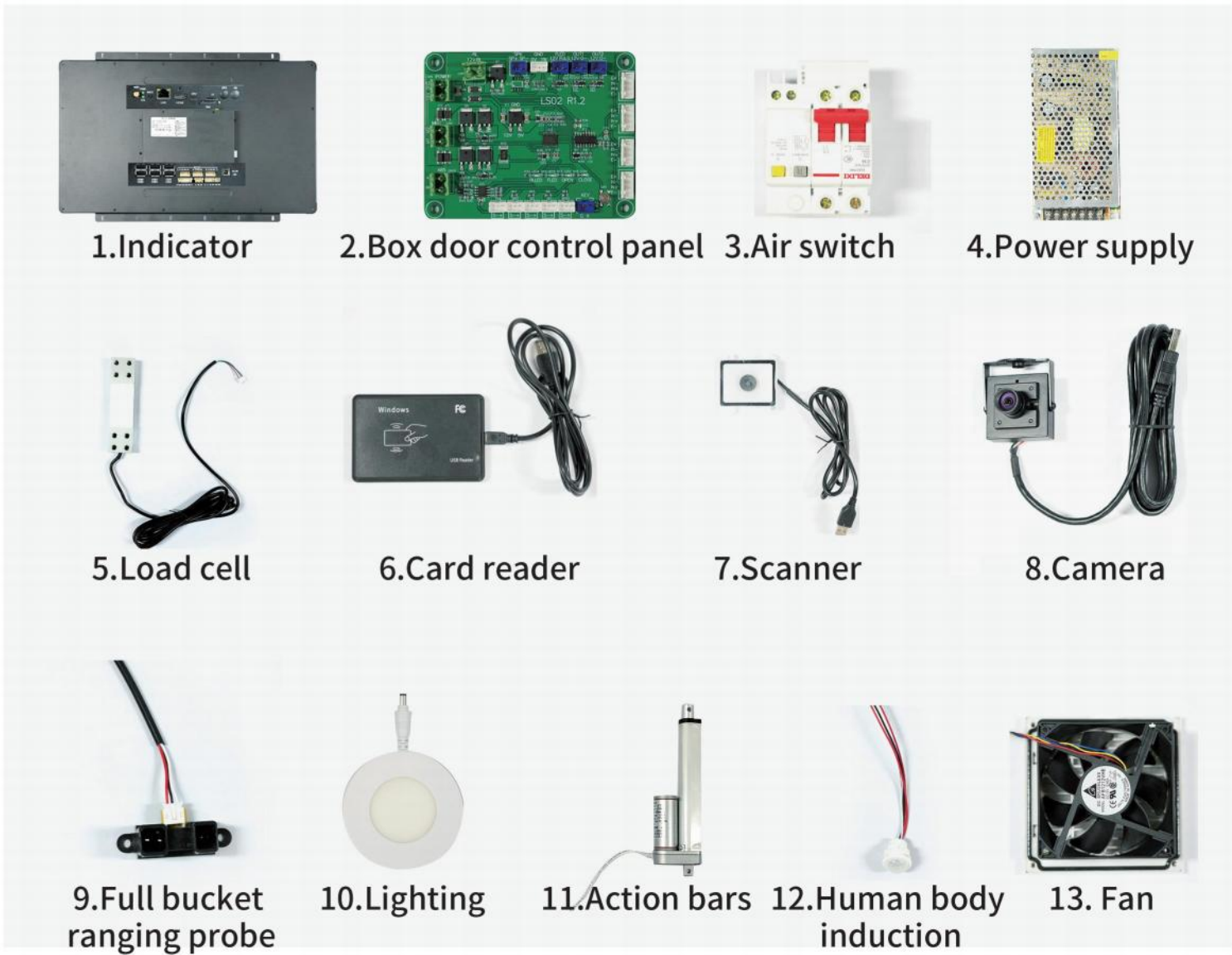


# Product function module

Android screen all-in-one machine	Easy to operate, fast and simple	Overflow indication	Make cleaning more effective and keep it clean and ready to serve
Sensor lighting	The light is on when people come, and the light is off after a delay when people leave	Face recognition	Automatic face recognition login
Points for	Exchange garbage and items to promote garbage classification	Weighing system	Accurate 1g, automatic weighing
Induction drop inlet	Automatically open when close to the drop inlet, sorting and disposing of garbage	Ambient Light	Energy saving



	Material name	Specification
1	Android screen all-in-one machine 21.5 inches	Main cabinet display
2	Door Control Panel	1 for 1 door (100*80mm), including 3 green plugs
3	Air switch	16A with leakage protection
4	Main control power supply	12V16.5A
5	Load cell	100KG 4-wire two parallel use
6	Card reader	USB plug, including wire, plug into the screen USB5
7	Scanner	Including cable, plug into the screen USB3
8	Face camera	The camera includes wires, plug into the screen USB4
9	Full bucket sensor	Full barrel ranging
10	LED lights	90MM
11	Electric actuator	12V 150mm 24mm/s with wire
12	Human sensor probe	With light sensor diameter 20mm
13	Fan	12V with filter, connect to 12V power supply





# AI Voice Smart Trash Can

Voice human-computer interaction system, using your voice instead of manual operation to completely free your hands and make it easier to use

Voice human-computer interaction system, using your voice instead of manual operation completely frees your hands, which is easier to use

Little star, little star

I am here!

What is waste battery?

Hazardous waste



## Product Features



### 1.AI voice recognition to open the door

Garbage classification is carried out through human-computer interaction question and answer, the voice interaction is clear and natural, and the name and type of garbage are automatically identified.



### 2.Full barrel warning

Full bucket detection and early warning makes cleaning more efficient, and at the same time keeps the trash can always clean and ready to put in, improving users' awareness of garbage classification.



### 3.Induction lighting

Through the high-precision infrared ranging sensor, the height of the items in the box is measured, and the software calculates that the full bucket status reaches the threshold and automatically uploads the data, and pushes the full bucket warning message.



### 4.LCD advertising screen

Promote garbage classification knowledge, regional management, news, classification activities, encourage and supervise information release.



### 5.Sink

After throwing away the garbage, wash your hands in time to keep them clean.

## RGW-002 SPECIFICATIONS

System: Android

Display screen: 21 inches

Category: 2 categories

Capacity: 120L\*2

Size: 1850\*740\*1900mm

Color: Silver Gray

Installation scene: office buildings, parks, communities, squares

Material: thickened steel plate

Main functions: AI voice, induction lighting, large display screen, full bucket alarm, classified storage

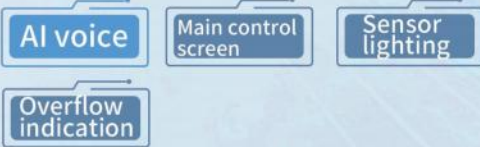


# AI voice intelligent dustbin



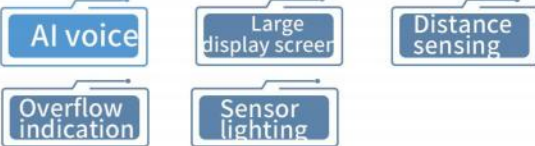
## RGAI-004

Category: 2 categories  
Size: 1600\*600\*1450mm  
Color: blue  
Capacity: 100L\*2  
Material: thickened steel plate  
Installation scene: parks, communities, squares, streets  
Main functions: AI voice recognition to open the door, full bucket detection and warning, sensor lighting, Android main control screen



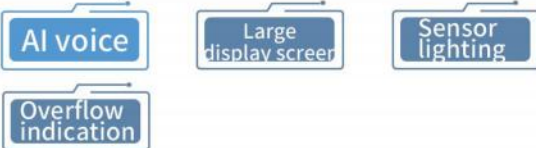
## MINI-002AI

System: Android  
Capacity: 50L\*2  
Size: 1000\*1000\*1000mm  
Material: thickened steel plate  
Color: white  
Installation scene: property community, kindergarten, children's scenic spot...  
Main functions: AI voice recognition to open the door, touch screen to open the door, intelligent distance sensing, full bucket detection and early warning, intelligent anti-pinch hand, Android main control screen, drop inlet shadow lamp



## RGAI-001

System: Android  
Category: 2 categories  
Size: 880\*500\*1303mm  
Material: thickened steel plate  
Color: blue  
Display screen: 21.5 inch all-in-one machine  
Capacity: 100L\*2  
Installation scene: office buildings, shopping malls, high-end residential areas, hotels, indoor applications  
Main functions: AI voice recognition to open the door, full bucket detection and early warning, induction lighting, L CD advertising screen



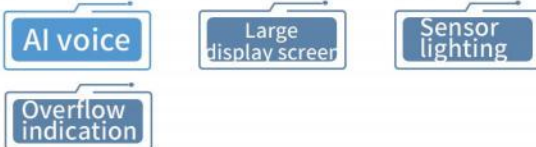
## RGAI-002

System: Android  
Category: 2 categories  
Size: 1360\*500\*1303mm  
Material: thickened steel plate  
Color: blue  
Display screen: 21.5 inch all-in-one machine  
Capacity: 100L\*2  
Installation scene: office buildings, shopping malls, high-end residential areas, hotels, indoor applications  
Main functions: AI voice recognition to open the door, full bucket detection and early warning, induction lighting, L CD advertising screen



## RGAI-003

System: Android  
Category: 4 categories  
Size: 2400\*500\*1303mm  
Material: thickened steel plate  
Color: blue  
Display screen: 21.5 inch all-in-one machine  
Capacity: 100L\*4  
Installation scene: office buildings, shopping malls, high-end residential areas, hotels, indoor applications  
Main functions: AI voice recognition to open the door, full bucket detection and early warning, induction lighting, L CD advertising screen





# Induction smart trash can

Intelligent human-computer interaction system, intelligent large screen, simple operation, inductive drop inlet, points exchange, easier to use.

Intelligent human-computer interaction system, intelligent large screen, simple operation, inductive projection, hands free, easier to use.

## Human body induction, automatic door opening

The real realization of throwing garbage without dirty hands, easily freeing hands brings a more convenient and comfortable experience, and is more convenient to use



Overflow indication

Sensor lighting

Induction door opening

Large display screen

points exchange

## Product Features



### 1.Android main ontrol screen

Publicity of garbage classification knowledge, promotion of regional management, news, classification activities, encourage and supervise the information release.



### 2.Point exchange machine

Use the Internet of Things technology to combine the garbage point system and item exchange to promote garbage classification.



### 3.Induction door opening

Close to the induction area of the drop inlet, the drop inlet will be opened automatically, and the garbage will be sorted out



### 4.4.LCD advertising screen

Promote garbage classification knowledge, regional management, news, classification activities, encourage and supervise information release.



### 5.Induction lighting

Induction lighting humanized design, saves energy and protect environment

## HX-001 SPECIFICATIONS

System: Android	Display screen: 21.5 inch all-in-one machine
Category: 4 categories	Capacity: 240L*4
Size: 3495*800*1890mm	Color: silver
Installation scene: property area, park, square, scenic spot	Material: thickened steel plate

Main functions: small program code scanning login, card swiping login, face recognition login, sensor lighting, login to open the door + points, sensor to open the door, intelligent anti-pinch hand, weighing system full bucket detection and warning, multi-functional drop inlet display screen, intelligent software platform, Android main control screen, points exchange machine, LED advertising screen



# Induction smart dustbin



## PX-006 SPECIFICATIONS

System: Android	Display screen: 7 inches
Classification: 4 Classification	Capacity: Custom
Dimension: L4000*W850*H2200mm	Color: white
Installation scenarios: parks, property community, office buildings, streets	Material: thickened steel plate
Main features: Small program scan code login、Swipe to log in、Facial recognition login、Induction lighting、Login to open the door + points、Induction door opening、Intelligent anti-pinch hand、Weighing system、Full barrel detection warning、Intelligent software platform、Android main control screen、Points exchange machine、Advertising light box	



PX-001

PX-003

Dimension: L1200\*W600\*H9900mm Capacity: Custom

Dimension: L2600\*W650\*H220mm Capacity: Custom



## RGW-004 SPECIFICATIONS

System: Android	Display screen: 21.5inches
Classification: 4 Classification	Capacity: 240L*4
Dimension: L2196*W790*H1870mm	Color: blue
Installation scenarios: parks, property community, office buildings, streets	Material: thickened steel plate
Main features: Small program scan code login、Swipe to log in、Facial recognition login、Induction lighting、Login to open the door + points、Induction door opening、Intelligent anti-pinch hand、Weighing system、Full barrel detection warning、Intelligent software platform、LED advertising screen	



RGW-001

RGW-001X

Dimension: L2820\*W790\*H1870mm Capacity: 240L\*2

Dimension: L1195\*W500\*H1172mm Capacity: 240L\*2



# Induction smart dustbin



- Full bucket Indication
- Induction Lighting
- Induction Door Opening
- Large Display Screen
- Face Recognition
- Swipe Card / Swipe Code
- Point System
- Software Platform

## YXG-001 SPECIFICATIONS

System: Android	Display screen: 21.5 inches
Classification: 4 Classification	Capacity: 240L*4
Dimension: L5600*W1500*H2500mm	Color: blue
Installation scenarios: parks, property community, office buildings, streets	Material: thickened steel plate
Main features: Small program scan code login, Swipe to log in, Facial recognition login, Induction lighting, Login to open the door + points, Induction door opening, Intelligent anti-pinch hand, Weighing system, Full barrel detection warning, Intelligent software platform	



## YXG-002

System: Android	Display Screen: 21.5 inches
Classification: 4 Classification	Capacity: 240L*4
Dimension: L4500*W2540*H2900mm	Material: thickened steel plate
Color: Blue	Installation scenarios: park, community, square, street
Main features: Small program scan code login, Swipe to log in, Facial recognition login, Induction lighting, Login to open the door + points, Induction door opening, Intelligent anti-pinch hand, Weighing system, Full barrel detection warning, Intelligent software platform, Intelligent advertising screen, Hand Washing Sink	
Induction Door Opening	Swipe Card / Swipe Code
Advertising Screen	Induction Lighting
Face Recognition	Software Platform
Full Bucket Indication	



## YXG-003

System: Android	Display Screen: 21.5 inches
Classification: 4 Classification	Capacity: 240L*4
Dimension: L5600*W1500*H2500mm	Material: thickened steel plate
Color: Blue	Installation scenarios: park, community, square, street
Main features: Small program scan code login, Swipe to log in, Facial recognition login, Induction lighting, Login to open the door + points, Induction door opening, Intelligent anti-pinch hand, Weighing system, Full barrel detection warning, Intelligent software platform, Intelligent advertising screen	
Induction Door Opening	Swipe Card / Swipe Code
Advertising Screen	Induction Lighting
Face Recognition	Software Platform
Full Bucket Indication	Hand Washing Sink



## YXG-004

System: Android	Display Screen: 21.5 inches
Classification: 4 Classification	Capacity: 240L*4
Dimension: L3720*W800*H1850mm	Material: thickened steel plate
Color: Blue	Installation scenarios: park, community, square, street
Main features: Small program scan code login, Swipe to log in, Facial recognition login, Induction lighting, Login to open the door + points, Induction door opening, Intelligent anti-pinch hand, Weighing system, Full barrel detection warning, Intelligent software platform	
Induction Door Opening	Swipe Card / Swipe Code
Software Platform	Induction Lighting
Face Recognition	Full Bucket Indication



Induction smart dustbin

# Induction Smart Bins



## RGG-002

System: Android      Display Screen: 10 inches  
Classification: 3 Classification      Capacity: 240L\*2  
Dimension: L4730\*W2520\*H3200mm      Material: thickened steel plate  
Color: Grey      Installation scenarios: property district, centralised waste collection office, street  
Main features: Small program scan code login, Swipe to log in, Facial recognition login, Induction lighting, Login to open the door + points, Induction door opening, Intelligent anti-pinch hand, Weighing system, Full barrel detection warning, Intelligent software platform, Intelligent two-classification + pocket two-classification, Points exchange machine, Hazardous waste recycling bins

Induction Door Opening

Points Exchange

Face Recognition

Weighing System

Advertising Screen

Induction Lighting



## RGG-003

System: Android      Display Screen: 21.5inches  
Classification:4 Classification      Capacity: 240L\*4  
Dimension: L5300\*W1300\*H2800mm      Material: thickened steel plate  
Color: Grey      Installation scenarios: property district, centralised waste collection office, street  
Main features: Small program scan code login, Swipe to log in, Facial recognition login, Induction lighting, Login to open the door + points, Induction door opening, Intelligent anti-pinch hand, Weighing system, Full barrel detection warning, Intelligent software platform, Hand Washing Sink

Induction Door Opening

Swipe Card / Swipe Code

Face Recognition

Full Bucket Indication

Advertising Screen

Induction Lighting



## RGG-004

System: Android      Display Screen: 10inches  
Classification:2 Classification      Capacity: 240L\*2  
Dimension: L1600\*W800\*H2200mm      Material: thickened steel plate  
Color: Grey      Installation scenarios: property block, office building, parks, street  
Main features: Face recognition login, induction lighting, intelligent anti-pinching, intelligent main control screen weighing, full bucket detection warning, LED advertising screen

Induction Door Opening

Induction Lighting

Face Recognition

Full Bucket Indication

Advertising Screen

Induction intelligent garbage booth

# Sensitive intelligent rubbish kiosk



## INTELLIGENT GARBAGE KIOSK

System: Android      Display Screen: 7inches  
Classification:4 Classification      Capacity: 120L\*4  
Dimension: L4200\*W1300\*H2650mm      Material: thickened steel plate  
Color: Grey      Installation scenarios: property block, office building, parks, street  
Main features:Mini program scan code login, induction lighting, intelligent door opening, AI voice, points system, weighing system, full bucket detection warning, intelligent software platform, advertising light box

Intelligent Door Opening

Scan code login

Face Recognition

Induction Lighting

Advertising Screen



## RUBBISH COLLECTION STATION

System: Android      Display Screen:21.5inches  
Classification:6 Classification      Capacity: 240L\*6  
Dimension: L5960\*W3160\*H3480mm      Material: thickened steel plate  
Color: Grey      Installation scenarios: property block, office building, parks, street  
Main features: sensor lighting, intelligent door opening, weighing system, full bucket detection warning, advertising light box, intelligent advertising screen, hand washing sink, camera

Intelligent Door Opening

Swipe Card / Swipe Code

Face Recognition

Induction Lighting

Advertising Screen

Hand Washing Sink



## GARBAGE COLLECTION STATION

System: Android      Display Screen:18.5inches  
Classification:5 Classification      Capacity: 120L\*5  
Dimension: L5000\*W2500\*H1400mm      Material: thickened steel plate  
Color: blue      Installation scenarios: property block, park  
Main features: Mini program scan code login, induction lighting, intelligent door opening, points system, weighing system, full bucket detection warning, intelligent software platform, advertising light box, intelligent advertising screen, hand washing sink

Intelligent Door Opening

Scan code login

Face Recognition

Weighing System

Advertising Screen

Face Recognition



# Sensitive Smart Recycling Bins

Intelligent human -machine interaction system recycling boxes, recycling bags, clothing, etc. can be reused to use daily necessities, and the points exchange is worth it.

Intelligent human-computer interaction system recycling box, recycling bags, clothing and other reusable life items, points exchange for value for money.



## Product Features



**1.Face recognition / swipe card login**  
Provide multiple ways to log in to meet the needs of different types of users and promote the rapid application of garbage classification to everyone.



**2.Intelligent door opening**  
Dual intelligent door opening methods, supporting both the opening of the door with points and the putting out of rubbish by visitors, allowing the separation of rubbish to be applied to different scenarios.



**3.Plastic bottle drop inlet**  
Plastic bottles are individually recycled for easy drop-off



**4.Classification identification**  
Clear garbage sorting and labeling, putting garbage at a glance



**5. Induction lighting**  
Humanized design of induction lighting, energy saving and environmental protection.

## YXG-201 SPECIFICATIONS

system: Android	Display Screen: 15.6 inches
Classification: 2 Classification	Capacity: 900L textile recycling + 50L plastic recycling
Dimension: L1550*W780*H2240mm	Color: off-white
Installation scenarios: community, park, square, street, school, factory	Material: thickened steel plate
Main features: mini program scan code login, swipe card login, induction lighting, login to open door + points, points withdrawal, intelligent anti-pinching hand, weighing system, counting system, full bucket detection warning, intelligent software platform, ambient light	



# Induction intelligent recycling box



**YXG-202**

System: Android      Display Screen: 21.5 inches  
Classification: 5 Classification      Capacity: 840L\*4+50L  
Dimension: L4140\*W780\*H2200mm      Material: thickened steel plate  
Color: Grey      Installation scenarios: community, park, square, street, school  
Main features: weighing system, induction lighting, full bucket alarm, large display, classified storage

- Full Bucket Indication
- Overflow indication
- code scanner
- large display



**YXG-203**

System: Android      Display Screen: 15.6 inches  
Classification: 5 Classification      Capacity: 840L\*4+50L  
Dimension: L4140\*W780\*H2200mm      Material: thickened steel plate  
Color: White  
Installation scenarios: community, park, square, street, school  
Main features: AI voice, weighing system, induction lighting, full bucket alarm, large display, classified storage

- Full Bucket Indication
- weighing system
- code scanner
- large display
- AI voice



**YXG-204**

System: Android      Display Screen: 21.5 inches  
Classification: 2 Classification      Capacity: 900L textile recycling + 50L plastic recycling  
Dimension: L1600\*W780\*H2300mm      Material: thickened steel plate  
Color: White      Installation scenarios: community, park, square, street  
Main features: mini program scan code login, swipe card login, induction lighting, login to open door + points, points withdrawal, intelligent anti-pinching hand, weighing system, counting system, full bucket detection warning, intelligent software platform, ambient light

- Full Bucket Indication
- swipe card/swipe code
- face recognition
- overflow indication
- point withdrawal
- Induction door openin
- software platform

**BAMBOO COLOR SMART RECYCLING BIN**

System: Android      Display Screen: 15.6 inches  
Classification: 5 Classification      Capacity: 840\*4 + 50L  
Dimension: L4500\*W820\*H2030mm      Material: thickened steel plate  
Color: green      Installation scenarios: community, park, square, street, school, factory  
Main features: AI voice, weighing system, induction lighting, full bucket alarm, large display, classified storage

- Full Bucket Indication
- Induction door openin
- AI voice
- weighing system



system: Android      Display Screen: 10 inches  
Classification: 5 Classification      Capacity: 840\*4 + 50L  
Dimension: L5450\*W800\*H1930mm      Material: thickened steel plate  
Color: blue      Installation scenarios: community, park, square, street, school, factory  
Main features: weighing system, induction lighting, large display, full bucket alarm, large display, classified storage, point exchange

**YXG-206**

- large display
- induction lighting
- Full Bucket Indication
- overflow indication



# Induction open door trash can

Close to the sensing area of the delivery port, the door of the delivery port will automatically open, and the garbage will be sorted and put in; the operation is simple.

## TWO CLASSIFICATIONS TRASH CANS

- Classification: 2 classifications
- Specification: 1000\*520\*1500mm
- Color: Blue
- Capacity: 50L\*2
- Material: Thickened steel plate
- Installation scene: parks, communities, squares, streets
- Main functions: induction door opening, full bucket alarm, intelligent classification



intelligent classification induction door opening



## TWO CLASSIFICATIONS TRASH CANS

- System: /
- Display screen: /
- Classification: 2 classifications
- Capacity: 50L\*2
- Specification: 1000\*520\*1500mm
- Material: Thickened steel plate
- Color: blue
- Installation scene: parks, communities, squares, streets
- Main functions: induction door opening, full bucket alarm, intelligent classification



## INTELLIGENT IOT MEDICAL WASTE BIN

- System: Android
- Display screen: 7 inch
- Classification: 2 classifications
- Capacity: customize
- Specification: 650\*600\*780mm
- Material: Thickened steel plate
- Color: Yellow
- Installation scenarios: hospitals, clinics, laboratories, medical beauty shops
- Main functions: small program scan code login, swipe card login, face recognition login, Login to open the door + points, intelligent anti-pinch, weighing system, full bucket detection alarm, intelligent software platform, sensor disinfecting



## INTELLIGENT IOT MEDICAL WASTE BIN

- System: /
- Display screen: /
- Classification: 2 classifications
- Capacity: customize
- Specification: 600\*600\*780mm
- Material: Thickened steel plate
- Color: yellow
- Installation scenarios: hospitals, medical beauty shops
- Main function: Swipe the card to open the delivery door



## TWO CLASSIFICATIONS TRASH CANS

- System: /
- Display screen: /
- Classification: 2 classifications
- Capacity: 50L\*2
- Specification: 900\*600\*1460mm
- Material: Thickened steel plate
- Color: silver gray
- Installation scene: parks, communities, squares, streets
- Main functions: induction door opening, full bucket alarm, intelligent classification





# Product function module

## Product function module

Solar power supply	Environmental protection and energy saving, easy installation	Wireless charging	Instant charging, enhance user experience
Sensor lighting	When people come, the light turns on, and when people leave, the light turns off after a delay	Bluetooth audio	Provide personalized leisure scenes and create different atmospheres
Advertising light boxes	Advertising, product display, etc.	4Gwifi	Help users solve temporary Internet access needs, convenient and fast
USB charging	Connect to the mobile phone to charge, smart and convenient	Ambient Light	Both high brightness and low light decay, energy saving



	Material name	Specification
1	Solar panels	50W 540*510*18
2	Solar Charge Controller	12V30A
3	open	2P 16A
4	Battery	12V32A 267*77*170
5	USB waterproof charging cable	5V 2A
6	Wireless charging	hole 6cm diameter 8cm
7	Bluetooth Speaker	5V 320*64*68mm
8	charging board	2 way USB
9	4G wireless router	With IoT card
10	light	12V 300*300
11	human sensor switch	diameter 20mm
12	rectifier	
13	the relay	





# Product advantage

Product advantage

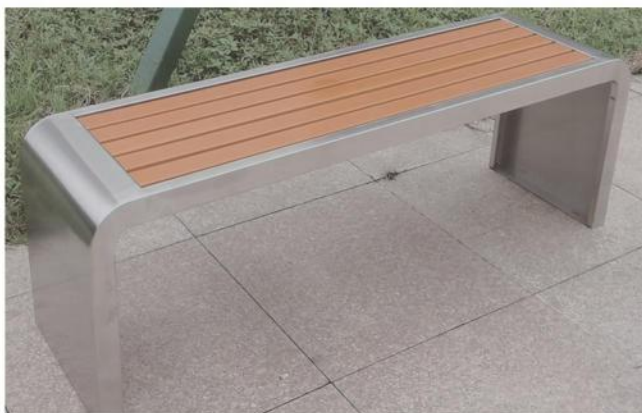
## Smart Park Bench

- ① Wireless charging ✓
- ② USB charging for outdoor emergency ✓
- ③ Induction lighting without fear of night ✓
- ④ Bluetooth speakers add fun ✓
- ⑤ Solar panels for environmentally friendly power generation ✓
- ⑥ More interesting combinations ✓



## Traditional park chair

- ① Cannot charge X
- ② Cannot save your phone at any time X
- ③ Can't see clearly at night X
- ④ No sound monotonous and boring X
- ⑤ No power X
- ⑥ Can't match components X



# Operating procedures

Operation process

### Wireless charging

High charging conversion rate, instant charging

### Sensor lighting

Intelligently sense the surrounding environment, the light will be on when people come, and the light will be off after a delay when people leave

### Bluetooth audio

Scan the QR code to connect to Bluetooth and choose your favorite songs

### USB charging

Standard interface, connect to mobile phone to charge

Wireless charging

Sensor lighting

Bluetooth audio

USB charging





# Smart Park Bench with Brim

The streamline design makes the product look chic and elegant. Hat brim shape, smart sensor lights, and multiple functions provide a good user experience

Streamline modeling design, so that the product looks chic and elegant. Hood shape for users to shelter from wind and rain. Multiple functions provide good user experience.

Solar Panel: 50W 540\*510\*18

Light: 12V 300\*300

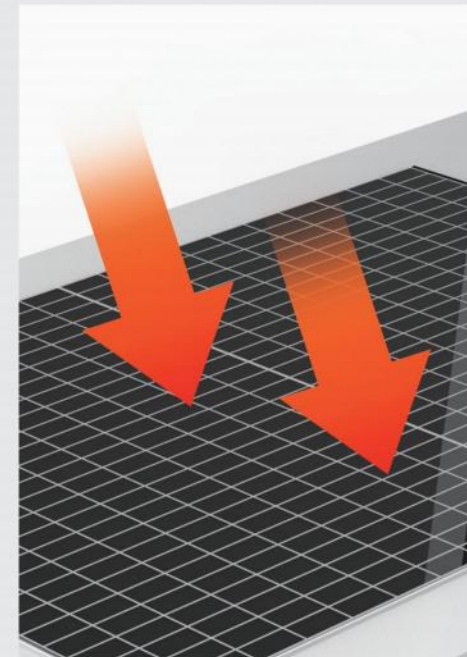
Product specification: 2000\*550\*2300(可定制)

Product configuration: smart park bench, solar panel, display screen, USB interface, WIFI,

Bluetooth audio, lighting



## • Product Features



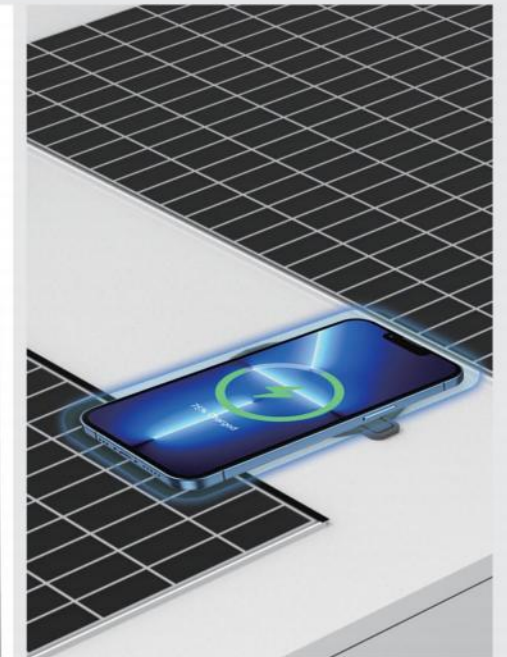
### 1.Solar powered

Solar power supply is environmentally friendly and energy-saving, easy to install, low maintenance cost, power attenuation to 90% in 10 years



### 2.Induction lighting

Humanized design of induction lighting, energy saving and environmental protection; the light is on when people come, and the light is off after people leave, the sensing distance is more than 4 meters



### 3.Wireless Charge

WPC-compliant Qi standard wireless charging induction coil, built-in isolation magnetic sheet, high charging conversion rate, wireless charging can be charged immediately, improving user experience



### 4.Advertising light box

Display advertisements, product displays, notifications and other types of publicity. Through evenly distributed transformer-free light strips, the light box can show high-definition effects with high brightness, no dark areas, and no flickering



### 5.Bluetooth audio

Bluetooth audio provides personalized leisure scenes and creates a different sense of atmosphere. Using high-performance digital functions, dual speakers and dual guide ports, compatible with 99% of smart devices on the market



Smart hooded Park Chair

Smart Park Bench with Brim

DMT-001

- Rated voltage: 12V30A
- product specification: 2000\*450\*2200
- Product material: galvanized sheet
- Product color: silver gray



Advertising light boxes

Sensor lighting

Solar panels

Wireless charging

Bluetooth audio

SPECIFICATIONS

Solar panel: 50W 540*510*18	Light: 12V 300*300
Battery: 12V32A 267*77*170	Charging board: 2-way USB
Wireless charging: opening 6CM diameter 8CM	USB waterproof charging cable: 5V 2A
Applicable scenarios: parks, communities, office buildings, pedestrian streets, shopping malls, squares, scenic spots...	4G wireless router: including IoT card
Product configuration: smart park bench, solar panel, display screen, USB interface, WIFI, Bluetooth audio, lighting	



DMT-002

Solar panel: 50W 540\*510\*18    Flashlight: 12V 300\*300

Product specification : 2100\*580\*2300    USB waterproof charging cable: 5V 2A

Wireless charging: opening 6CM diameter 8CM    Charging board: 2-way USB

Battery: 12V32A 267\*77\*170

4G wireless router: including IoT card

Product configuration: smart park bench, solar panel, display screen, USB interface, WIFI, Bluetooth audio, lighting

Applicable scenarios: parks, communities, office buildings, pedestrian streets, shopping malls, squares, scenic spots...

Solar panels

USBcharging cable

Advertising light boxes

Bluetooth audio

Sensor lighting

Wireless charging



DMT-003

Solar panel: 50W 540\*510\*18    Flashlight: 12V 300\*300

Product specification : 2000\*650\*2250    USB waterproof charging cable: 5V 2A

Wireless charging: opening 6CM diameter 8CM    Charging board: 2-way USB

Battery: 12V32A 267\*77\*170

4G wireless router: including IoT card

Product configuration: smart park bench, solar panel, display screen, USB interface, WIFI, Bluetooth audio, lighting

Applicable scenarios: parks, communities, office buildings, pedestrian streets, shopping malls, squares, scenic spots...

Solar panels

USBcharging cable

Advertising light boxes

Bluetooth audio

Sensor lighting

Wireless charging

DMT-004

Solar panel: 50W 540\*510\*18    Flashlight: 12V 300\*300

Product specification : 2000\*460\*2200    USB waterproof charging cable: 5V 2A

Wireless charging: opening 6CM diameter 8CM    Charging board: 2-way USB

Battery: 12V32A 267\*77\*170

4G wireless router: including IoT card

Product configuration: smart park bench, solar panel, display screen, USB interface, WIFI, Bluetooth audio, lighting

Applicable scenarios: parks, communities, office buildings, pedestrian streets, shopping malls, squares, scenic spots...

Solar panels

USBcharging cable

Advertising light boxes

Bluetooth audio

Sensor lighting

Wireless charging



DMT-005

Solar panel: 50W 540\*510\*18    Flashlight: 12V 300\*300

Product specification : 2000\*550\*2300    USB waterproof charging cable: 5V 2A

Wireless charging: opening 6CM diameter 8CM    Charging board: 2-way USB

Battery: 12V32A 267\*77\*170

4G wireless router: including IoT card

Product configuration: smart park bench, solar panel, display screen, USB interface, WIFI, Bluetooth audio, lighting

Applicable scenarios: parks, communities, office buildings, pedestrian streets, shopping malls, squares, scenic spots...

Solar panels

USBcharging cable

Advertising light boxes

Bluetooth audio

Sensor lighting

Wireless charging



Smart hooded Park Chair

# Smart Park Bench with Brim

## DMT-006

- Rated voltage: 12V30A
- Product specifications: 2000\*550\*2300
- Product material: galvanized sheet
- Product color: silver gray

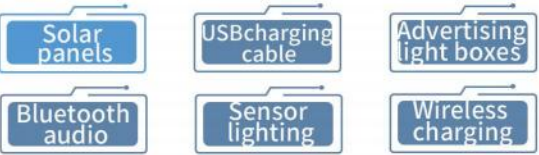


### SPECIFICATIONS

Solar panel: 50W 540*510*18	Light: 12V 300*300
Battery: 12V32A 267*77*170	Charging board: 2-way USB
Wireless charging: opening 6CM diameter 8CM	USB waterproof charging cable: 5V 2A
Applicable scenarios: parks, communities, office buildings, pedestrian streets, shopping malls, squares, scenic spots...	4G wireless router: including IoT card
Product configuration: smart park bench, solar panel, display screen, USB interface, WIFI, Bluetooth audio, lighting	

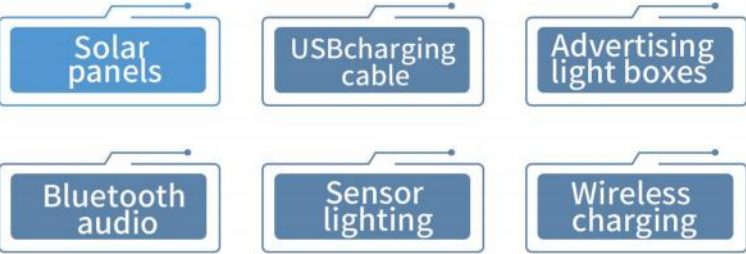
## DMT-007

- Solar panel: 50W 540\*510\*18    Flashlight: 12V 300\*300
- Product specification : 2000\*550\*2300    USB waterproof charging cable: 5V 2A
- Wireless charging: opening 6CM diameter 8CM    Charging board: 2-way USB
- Battery: 12V32A 267\*77\*170
- 4G wireless router: including IoT card
- Product configuration: smart park bench, solar panel, display screen, USB interface, WIFI, Bluetooth audio, lighting
- Applicable scenarios: parks, communities, office buildings, pedestrian streets, shopping malls, squares, scenic spots...



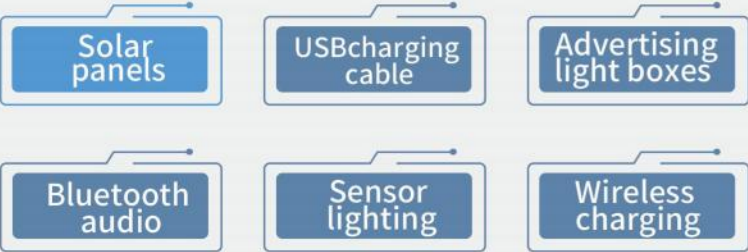
## DMT-008

- Solar panel: 50W 540\*510\*18    Flashlight: 12V 300\*300
- Product specification : 2000\*550\*2300    USB waterproof charging cable: 5V 2A
- Wireless charging: opening 6CM diameter 8CM    Charging board: 2-way USB
- Battery: 12V32A 267\*77\*170
- 4G wireless router: including IoT card
- Product configuration: smart park bench, solar panel, display screen, USB interface, WIFI, Bluetooth audio, lighting
- Applicable scenarios: parks, communities, office buildings, pedestrian streets, shopping malls, squares, scenic spots...



## DMT-009

- Solar panel: 50W 540\*510\*18    Flashlight: 12V 300\*300
- Product specification : 2000\*550\*2300    USB waterproof charging cable: 5V 2A
- Wireless charging: opening 6CM diameter 8CM    Charging board: 2-way USB
- Battery: 12V32A 267\*77\*170
- 4G wireless router: including IoT card
- Product configuration: smart park bench, solar panel, display screen, USB interface, WIFI, Bluetooth audio, lighting
- Applicable scenarios: parks, communities, office buildings, pedestrian streets, shopping malls, squares, scenic spots...

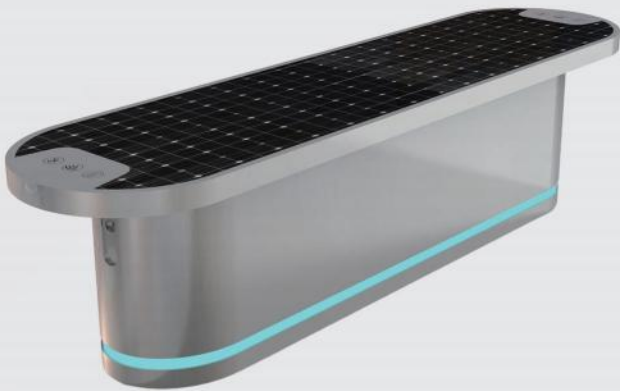




# Smart Deconstructed Park Bench

A variety of practical functions, increase the sense of science and technology at the same time, give more convenient use experience

A variety of practical functions, increase the sense of science and technology at the same time, give a more convenient use experience.



## JGX-002

Solar panel: 50W 540\*510\*18    Flashlight: 12V 300\*300  
Product specification : 1800\*450\*450    USB waterproof charging cable: 5V 2A  
Wireless charging: opening 6CM diameter 8CM    Charging board: 2-way USB  
Battery: 12V32A 267\*77\*170  
4G wireless router: including IoT card  
Product configuration: smart park bench, solar panel, display screen, USB interface, WIFI, Bluetooth audio, lighting  
Applicable scenarios: parks, communities, office buildings, pedestrian streets, shopping malls, squares, scenic spots...



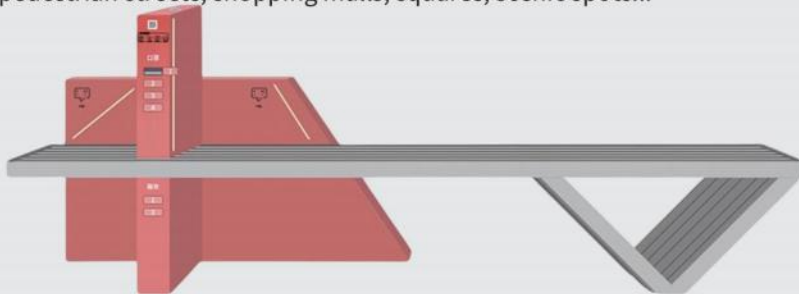
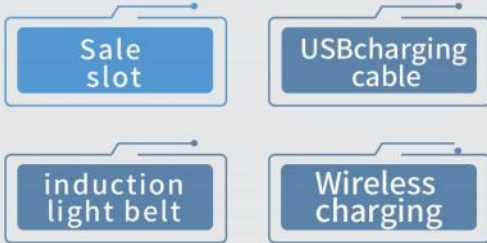
## JGX-003

Solar panel : 50W 540\*510\*18    USB waterproof charging cable: 5V 2A  
Product specification: 2000\*450\*450    Charging board: 2-way USB  
Battery: 12V32A 267\*77\*170  
4G wireless router: including IoT card  
Product configuration: smart park bench, solar panel, USB interface  
Applicable scenarios: parks, communities, office buildings, pedestrian streets, shopping malls, squares, scenic spots...



## JGX-004

Light: 12V    USB waterproof charging cable: 5V 2A  
Product specifications: : 2500\*580\*970  
Wireless charging: opening 6CM diameter 8CM    Charging board: 2-way USB  
Battery: 12V32A 267\*77\*170  
4G wireless router: including IoT card  
Product configuration: Intelligent park chair, induction light belt, wireless charging, USB interface, mask box, raincoat box  
Applicable scenarios: parks, communities, office buildings, pedestrian streets, shopping malls, squares, scenic spots...



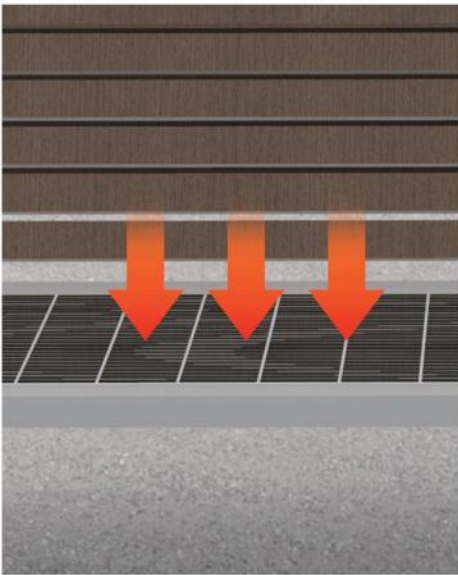
### 1.Wireless charging

In line with WPC Qi standard wireless charging induction coil, built-in isolation magnetic sheet, high charging conversion rate, wireless charging is put and charged, improve user experience



### 2.Usb charging

Standard USB interface, waterproof long life, connected mobile phone can be charged, smart and convenient



### 3.Solar power supply

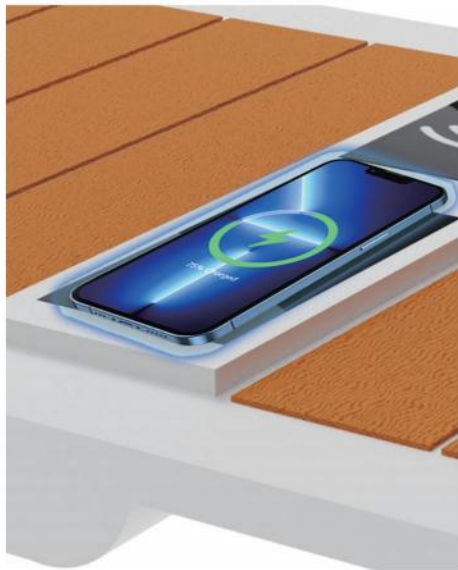
Monocrystalline silicon solar cells have high conversion efficiency, excellent low-light performance, easy installation, low maintenance cost, and 10 years of power attenuation to 90%.



# Smart Large Space Park Chair

Comfortable large space, good light transmission, with automatic vending machine can buy water and snacks, with a variety of accessories, increase the fun

Comfortable large space, good light transmission, with automatic vending machine can buy water and snacks; Accessorize with various accessories for added fun.



## 1. Wireless charging

In line with WPC Qi standard wireless charging induction coil, built-in isolation magnetic sheet, high charging conversion rate, wireless charging is put and charged, improve user experience;



## 2. Bluetooth audio

The use of high-performance digital efficacy, sound source reduction more than 99%, close to lossless, double speakers double guide port, compatible with 99% of the market intelligent equipment, to provide personalized leisure scene, create different atmosphere.;



## 3. A variety of parts collocation and combination

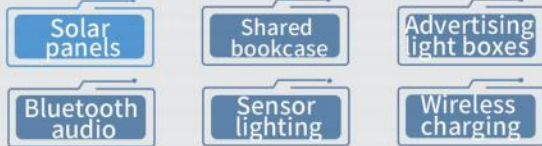
It can be matched with seesaw, massage chair, lounge chair, etc., suitable for different scenes.



## JYG-001

Solar panel: 50W 540\*510\*18 Flashlight: 12V 300\*300  
Product specification : 2000\*1525\*2300 USB waterproof charging cable: 5V 2A  
Wireless charging: opening 6CM diameter 8CM Charging board: 2-way USB  
Battery: 12V32A 267\*77\*170  
4G wireless router: including IoT card

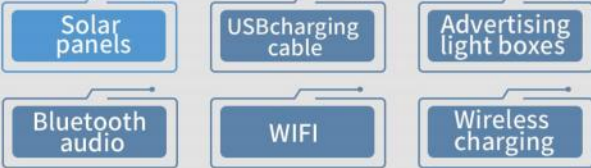
Product configuration: smart park bench, solar panel, display screen, USB interface, WIFI, Bluetooth audio, lighting  
Applicable scenarios: parks, communities, office buildings, pedestrian streets, shopping malls, squares, scenic spots...



## JYG-004

Solar panel: 50W 540\*510\*18 Flashlight: 12V 300\*300  
Product specification : 2000\*800\*1950 USB waterproof charging cable: 5V 2A  
Wireless charging: opening 6CM diameter 8CM Charging board: 2-way USB  
Battery: 12V32A 267\*77\*170  
4G wireless router: including IoT card

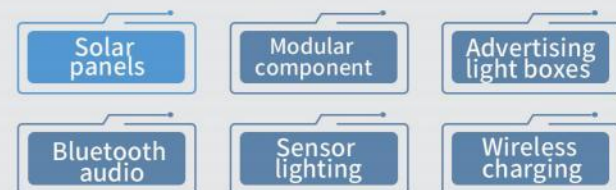
Product configuration: smart park bench, solar panel, display screen, USB interface, WIFI, Bluetooth audio  
Applicable scenarios: parks, communities, office buildings, pedestrian streets, shopping malls, squares, scenic spots, Art museum



## JYG-003

Solar panel: 50W 540\*510\*18 Flashlight: 12V 300\*300  
Product specification : Custom size USB waterproof charging cable: 5V 2A  
Wireless charging: opening 6CM diameter 8CM Charging board: 2-way USB  
Battery: 12V32A 267\*77\*170  
4G wireless router: including IoT card

Product configuration: smart park bench, solar panel, display screen, USB interface, WIFI, Bluetooth audio  
Applicable scenarios: parks, communities, office buildings, pedestrian streets, shopping malls, squares, scenic spots...





# Engineering case

Engineering case



Community garbage sorting station project



Urban smart supporting project

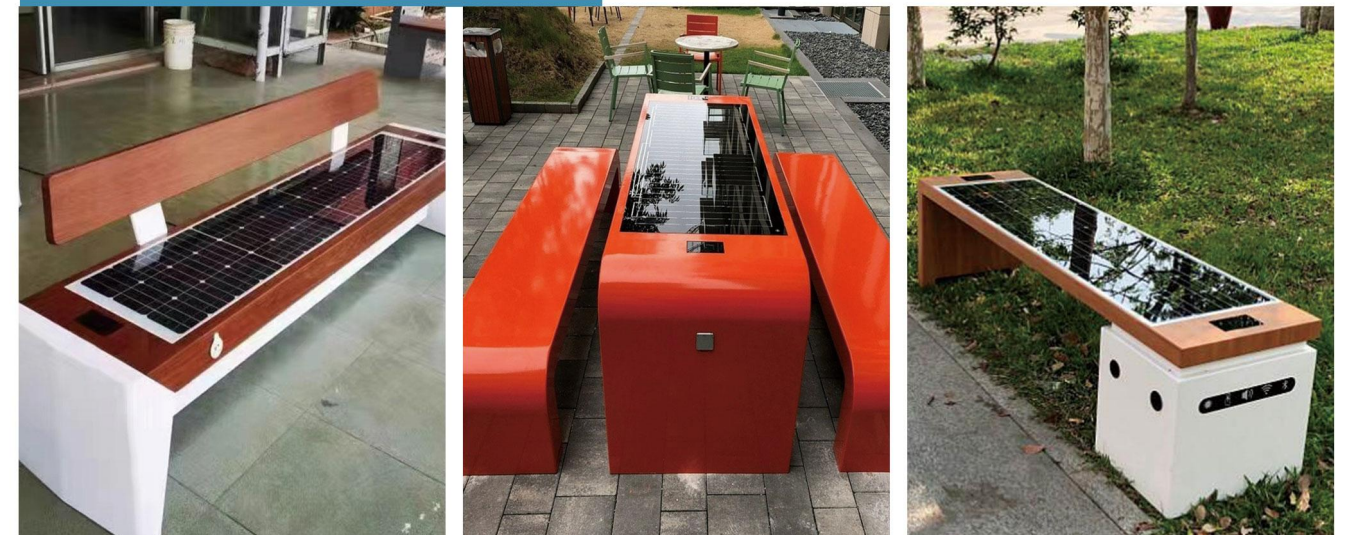


## Philippines Smart Trash Can Project , located in Manila

Engineering renovation project >

Smart Park Bench project in Scarborough, UK

Engineering renovation project



< Smart Park project

Smart Park Bench project in Positano, Italy

Smart Park project

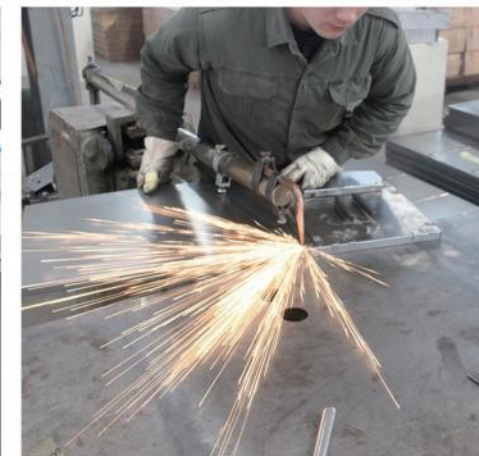




# ENTERPRISE QUALIFICAYION



## OUR FACTORY



## WORKSHOP/WORKER OPERATION



## LOADING AND TRANSPORTATION



## AFTER-SALE SERVICE



## CUSTOM DEVELOPMENT



From appearance design, accessories assembly, software development, to provide one-stop solutions



**ELECTRONIC PARTS**  
WARRANTY ONE YEAR,  
LIFETIME MAINTENANCE



**CABINET BODY**  
WARRANTY ONE YEAR,  
LIFETIME MAINTENANCE



**AFTER-SALES SERVICE**  
ALL YEAR ROUND WITHOUT -  
REST, 24 HOURS RESPONSE



**WE PROMISE**  
PROVIDE LIFETIME SERVICE FOR  
ALL PRODUCTS, ONE COOPERAT  
ION, LIFETIME SERVICE



### SOFTWARE DEVELOPMENT

We provide customized development of intelligent cabinet software system according to customers' functional requirements



### DESIGN, HARDWARE CUSTOMIZATION

Provide hardware customization services, specifications and sizes can be provided by customers



### ELECTRONIC ACCESSORIES

We provide a complete set of electronic accessories (including: body sensor, camera, display screen, etc.)





# Smart park bench core technology

